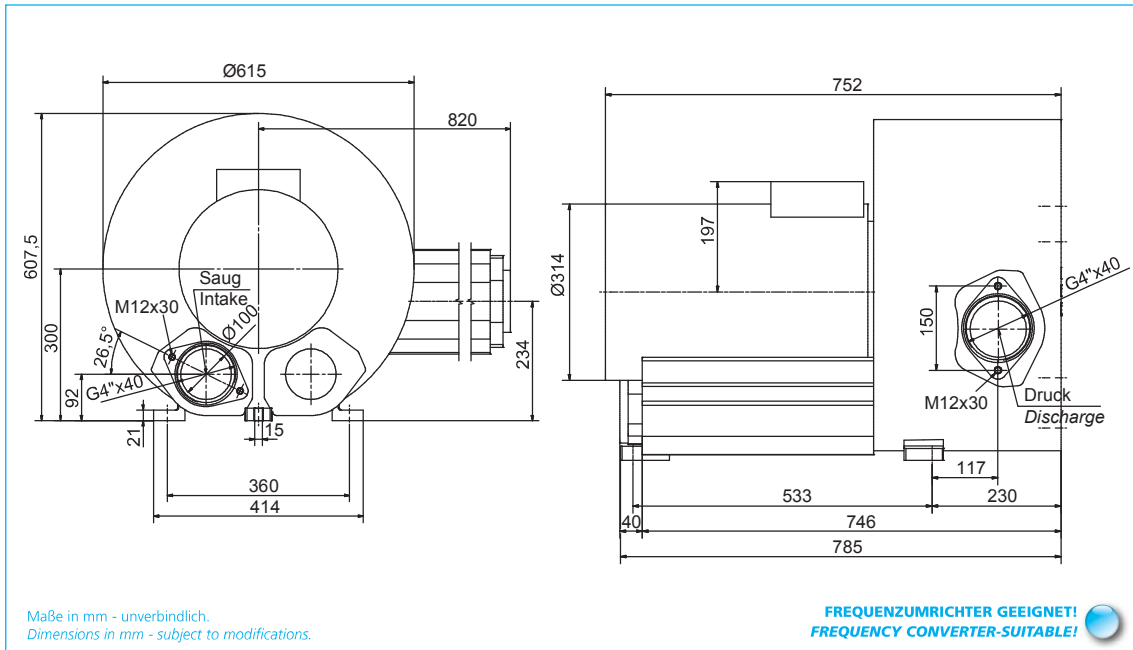
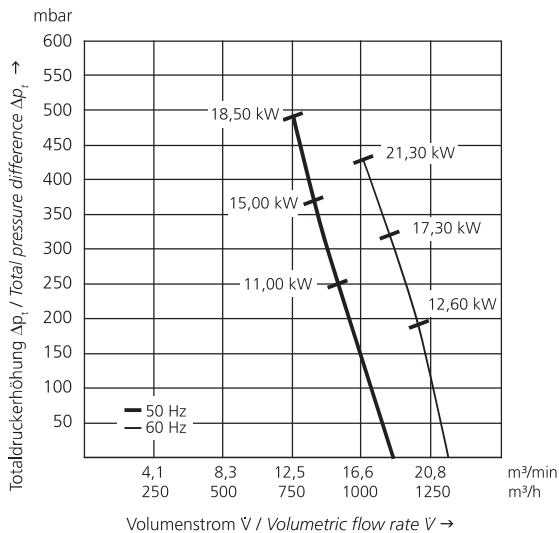


# 2SD 920 IE3



Typ Type	Effizienzklasse Efficiency class	Frequenz Frequency	Grenzwerte der Drosselkurve Überdruck Maximum performance when used as blower		Grenzwerte der Drosselkurve Unterdruck Maximum performance when used as extractor		Nennwerte des Motors Motor ratings			Schalldruckpegel Sound pressure level	Gewicht (ca.) Weight (approx.)
			$\dot{V}$ max.	$\Delta p_t$ max.	$\dot{V}$ max.	$\Delta p_t$ max.	Leistung Rated output	Spannung Voltage	Strom Current		
			$\dot{V}_{max}$	$\Delta p_{t, max}$	$\dot{V}_{max}$	$\Delta p_{t, max}$					
Hz	m <sup>3</sup> /min	mbar	m <sup>3</sup> /min	mbar	kW	V	A	dB (A)	kg		
2SD 920	IE3	50	18,50	250	18,50	270	11,00	400/690	19,60/11,30	74	195
		60	21,83	190	21,83	220	12,60	480	18,70	78	195
2SD 920	IE3	50	18,50	370	18,50	410	15,00	400/690	26,50/15,30	74	208
		60	21,83	320	21,83	390	17,30	480	26,00	78	208
2SD 920	IE3	50	18,50	490	18,50	440	18,50	400/690	32,50/18,80	74	210
		60	21,83	430	21,83	460	21,30	480	32,40	78	210

## Überdruck / Pressure



## Unterdruck / Vacuum

