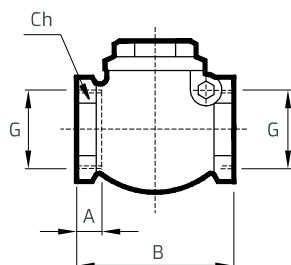


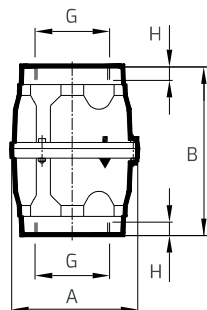
## NON-RETURN VALVE VALVOLA DI NON RITORNO SERIES/SERIE VC



Dimensions \ Ingombri

Mod	DN	A (mm)	B (?)	G (?)	Ch Hex / Esagono (mm)	Weight Peso (Kg)
VC1	15	8	G1 <sup>1</sup> / <sub>4</sub>	G1 <sup>1</sup> / <sub>2</sub>	25	0,16
VC2	20	8	G1 <sup>1</sup> / <sub>2</sub>	G1 <sup>3</sup> / <sub>4</sub>	32	0,33
VC3	25	10	G2"	G1"	38	0,38
VC4	32	10	G3"	G1 <sup>1</sup> / <sub>4</sub>	47	0,46
VC5	40	10	G4"	G1 <sup>1</sup> / <sub>2</sub>	55	0,74
VC6	50	11	G4"	G2"	67	1,02
VC8	80	16	G4"	G3"	95	2,44
VC9	100	20	G4"	G4"	124	3,90
VC10	125	22	G4"	G5"	150	6,97

## VACUUM/PRESSURE RELIEF VALVE VALVOLA LIMITATRICE VUOTO/PRESSIONE SERIES/SERIE VRL

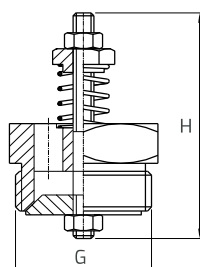


Dimensions \ Ingombri

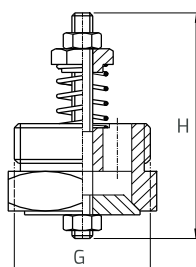
Mod	DN	A (mm)	B (mm)	G (mm)	H (mm)	Weight Peso (Kg)
VRL6G	50	102	175	G2"	12	0,89
VRL6HPG	50	102	175	G2"	12	0,89
VRL8G	80	135	190	G3"	15	2,02
VRL8HPG	80	135	190	G3"	15	2,02
VRL9G	100	160	206	G4"	18	2,81
VRL6N	50	102	175	2"NPT	12	0,89
VRL6HPN	50	102	175	2"NPT	12	0,89
VRL8N	80	135	190	3"NPT	15	2,02
VRL8HPN	80	135	190	3"NPT	15	2,02
VRL9N	100	160	206	4"NPT	18	2,81

## VACUUM/PRESSURE RELIEF VALVE VALVOLA LIMITATRICE VUOTO/PRESSIONE SERIES/SERIE RV/VLA

Mod RV3



Mod VLA3



Dimensions \ Ingombri

Mod	DN	G (mm)	H (mm)	Weight Peso (g)
RV3	25	G1"	57	70
VLA3	25	G1"	57	70